

Carbon Head shell for universal tone-arms

## HS-CF

### SPECIFICATIONS

HEAD SHELL: 4.0mm thickness CFRP (17Layered Prepreg)

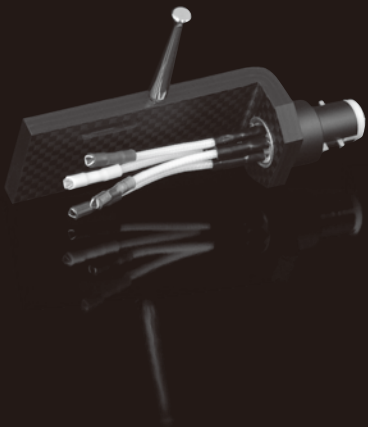
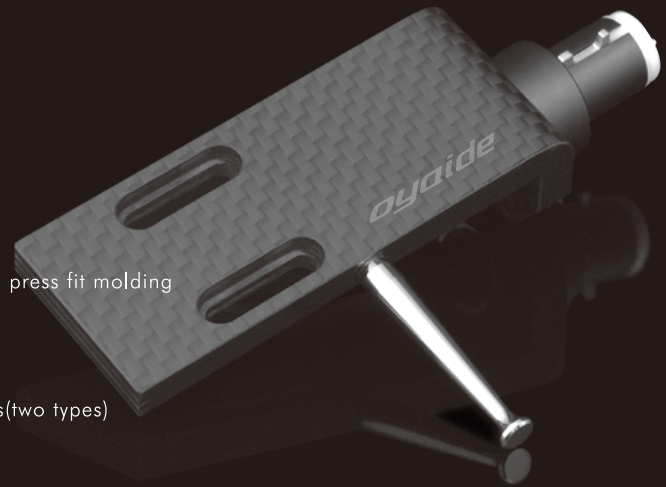
SOCKET: Aluminum coupling socket with a shielding by resinous press fit molding

Gold plated brass contact-pins

WEIGHT: 12g

DIMENSIONS: 20(W) x 56(L) x 13(H) mm

ATTACHMENTS: 5N silver lead wires(HSR-AG), Aluminum screws(two types)



5N pure silver head shell lead wires

## HSR-AG

### SPECIFICATIONS

CONDUCTOR: 5N pure silver wire (7/0.2)

SHIELDING: Double stacked silk thread + glass sleeve

CONNECTORS: Rhodium plated phosphor bronze

LENGTH: 42mm x 4 pieces (Red, White, Green, Blue)

Made in Japan

### FEATURES

- Single-molding 4.0mm thickness CFRP (Carbon Fiber Reinforced Plastics) creates a smooth decrease of unwanted vibration without Changing moments of vibration of tone arm
- Aluminum coupling socket with a shielding by resinous press fit molding  
Gold plated brass contact-pins for a perfect signal transmission
- 5N pure silver lead-wires with a rhodium plated phosphor bronze connector